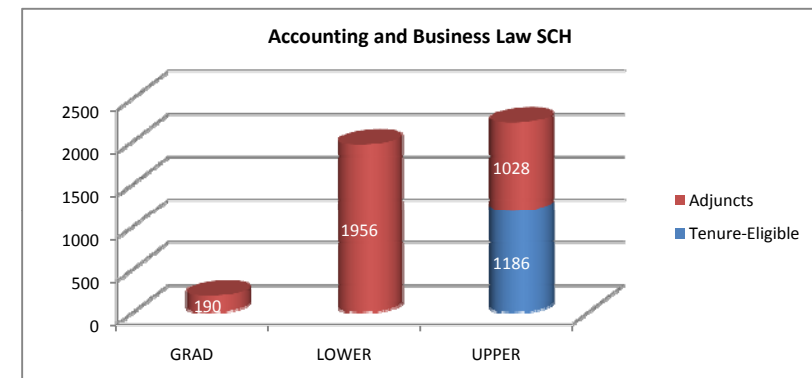


1. Total Headcount faculty (Fall 2007)	13
2. Total FTE Faculty (Fall 2007)	8.0
3. Tenured/tenure eligible faculty as % of total instructional faculty (Fall 2007)	19%
4. FTE students taught (Fall 2007)	146
5. Total Expenditures Accounting and Business Law	\$ 914,197.00
6. Direct instructional expenditure per SCH	\$ 161.00
7. Direct instructional expenditure per FTE student	\$ 4,693.00
8. Personnel cost as percent of direct instructional ex	98%

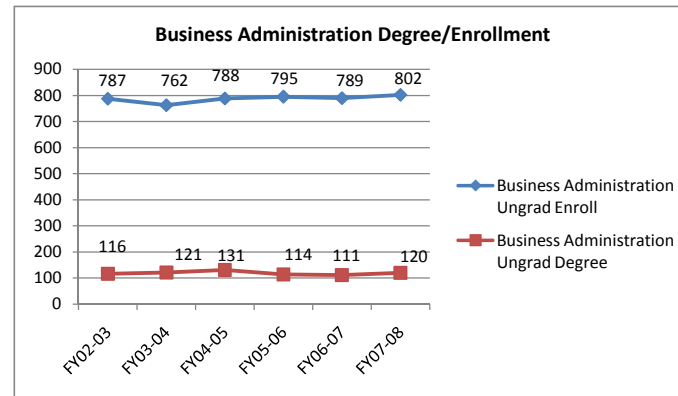
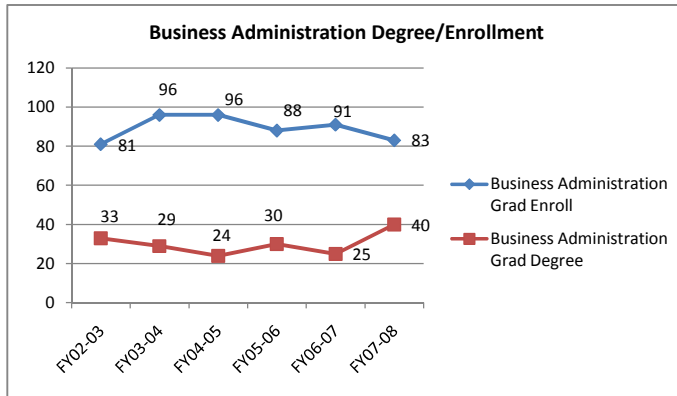
### UNDERGRADUATE PROFILE

Accounting Enrollment	214
Gender	
Women	138 64%
Men	76 36%
Race/Ethnicity	
African American / Black	172 80%
American Indian / Alaskan Native	0 0%
Asian / Pacific Islander	5 2%
Hispanic	1 0%
International	0 0%
White	36 17%
Race/Ethnicity Unknown	0 0%
Geographic Distribution (Degree-Seeking)	
Tennessee	77%
Other US States & Territories	21%
Other Countries	2%
Age (Degree-Seeking)	
Average Age	25
Percent of Undergraduates Age 25 or Older	33%

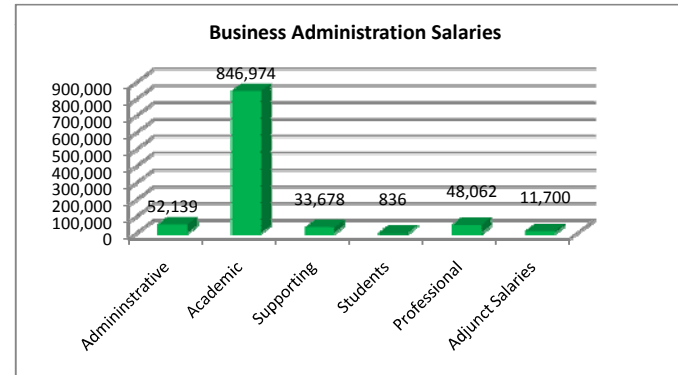
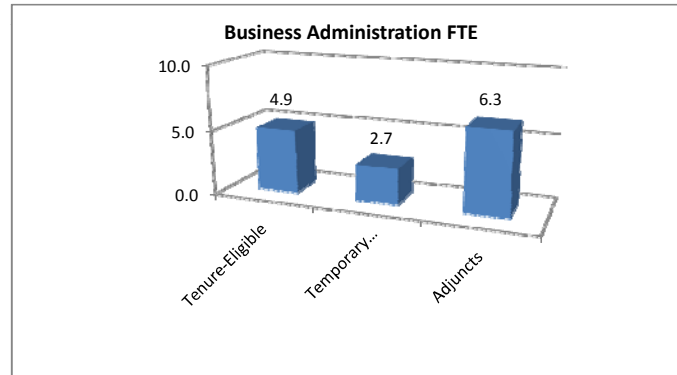


NOTICE: Data Sources: SIS Batch Reports; Banner Scripts & Query Reports; 2008-2009 Budget Summary. This data portrait, prepared by the Office of Institutional Effectiveness, Quality & Assessment, is for internal use only by TSU.

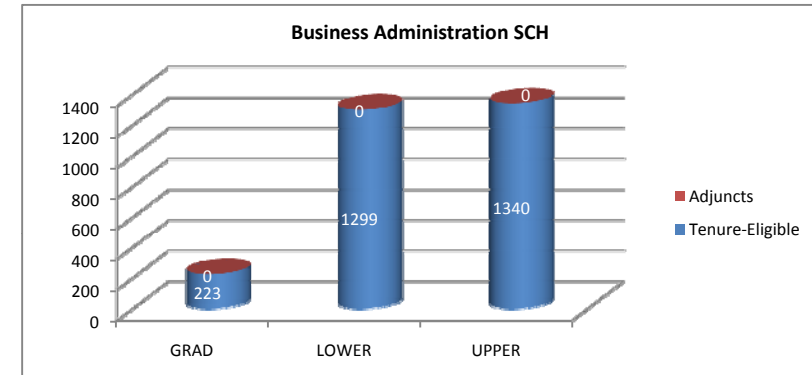
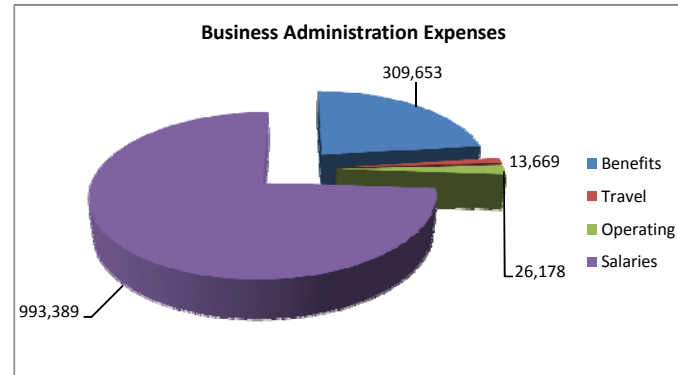
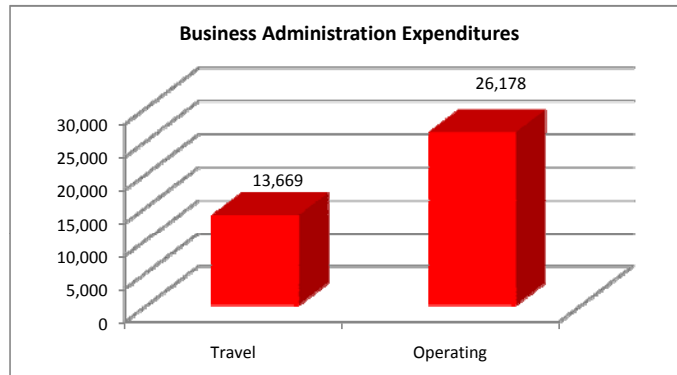
Business Administration



1. Total Headcount faculty (Fall 2007)	18.0
2. Total FTE Faculty (Fall 2007)	12.3
3. Tenured/tenure eligible faculty as % of total instructional faculty (Fall 2007)	53%
4. FTE students taught (Fall 2007)	243.3
5. Total Expenditures Business Administration	\$ 1,342,889.00
6. Direct instructional expenditure per SCH	\$ 163.00
7. Direct instructional expenditure per FTE student	\$ 4,605.00
8. Personnel cost as percent of direct instructional ex	97%

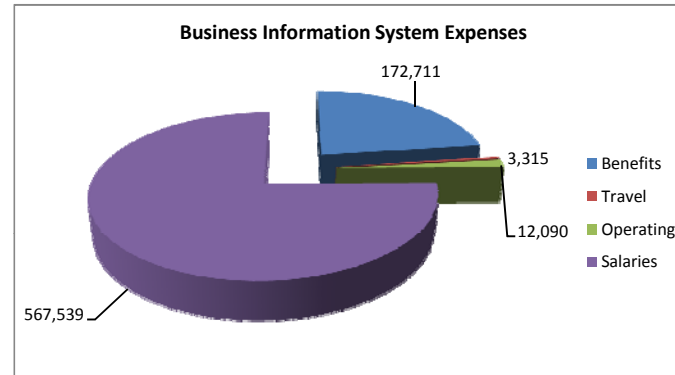
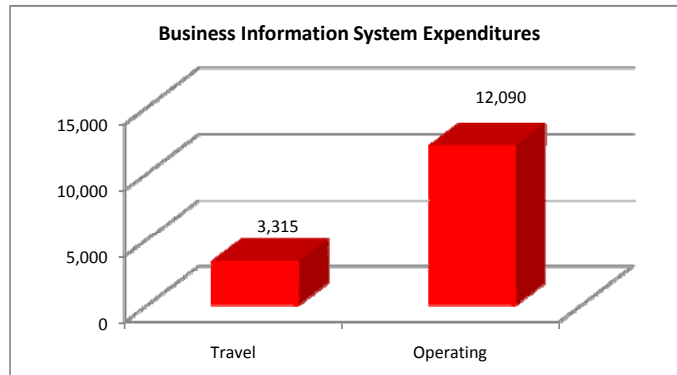
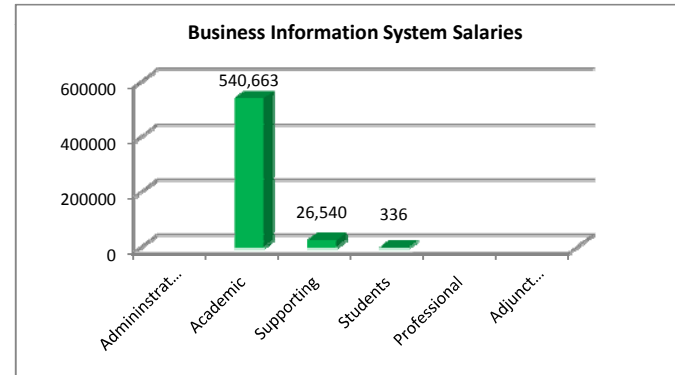
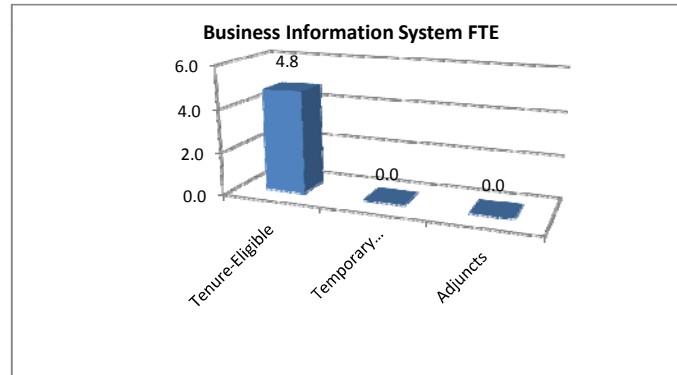
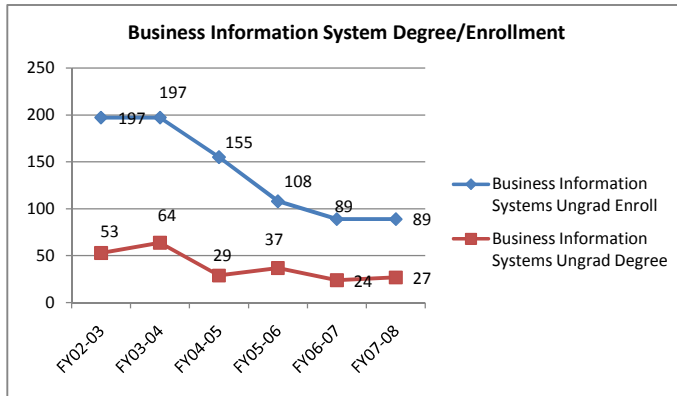


UNDERGRADUATE PROFILE	UNDERGRAD	GRADUATE
Total	802	83
Gender		
Women	394	47%
Men	408	51%
Race/Ethnicity		
African American / Black	733	91%
American Indian / Alaskan Native	0	0%
Asian / Pacific Islander	7	1%
Hispanic	9	1%
International	0	0%
White	53	7%
White		31%
Race/Ethnicity Unknown	0	0%
Geographic Distribution (Degree-Seeking)		
Tennessee	69%	76%
Other US States & Territories	31%	4%
Other Countries	0%	20%
Age (Degree-Seeking)		
Average Age	23	30.46
Percent of Undergraduates Age 25 or Older	20%	80%



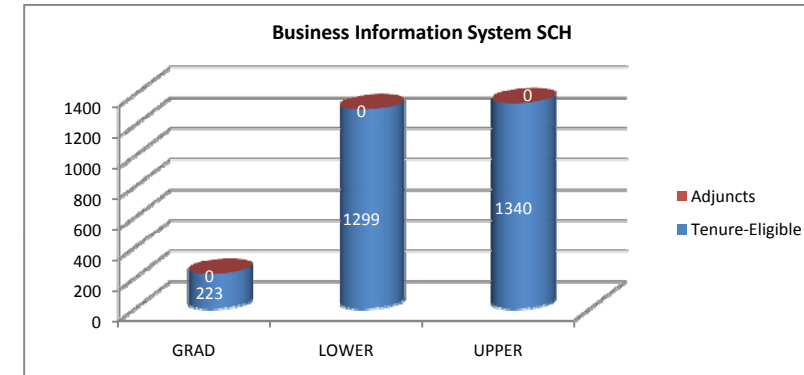
NOTICE: Data Sources: SIS Batch Reports; Banner Scripts & Query Reports; 2008-2009 Budget Summary. This data portrait, prepared by the Office of Institutional Effectiveness, Quality & Assessment, is for internal use only by TSU.

Business Information System

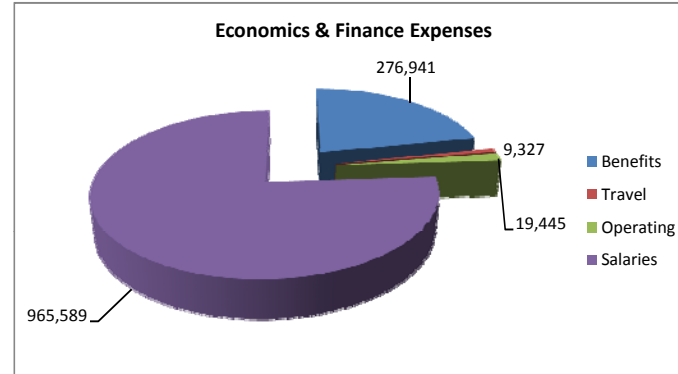
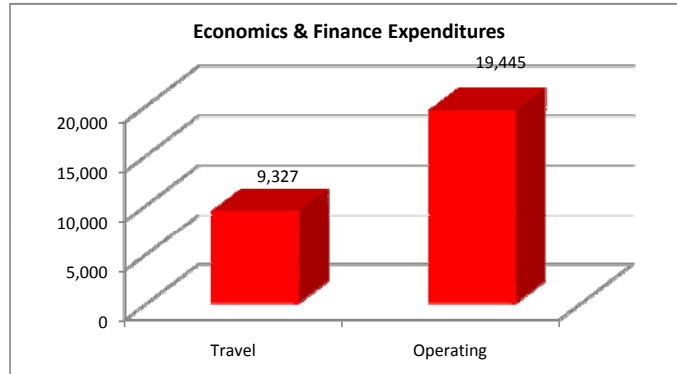
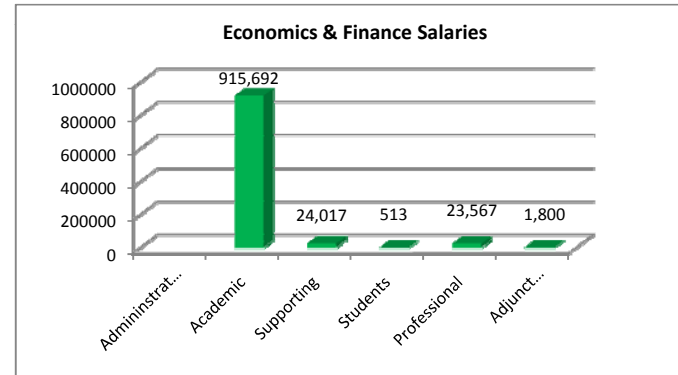
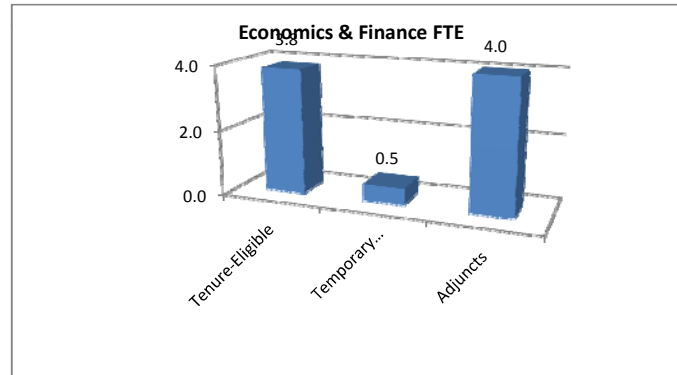
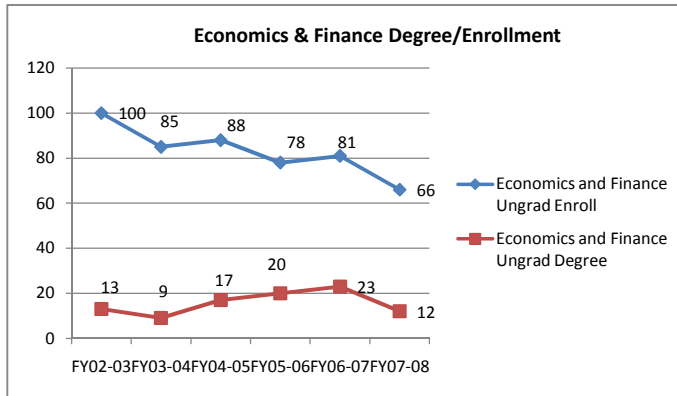


1. Total Headcount faculty (Fall 2007)	6.0
2. Total FTE Faculty (Fall 2007)	4.8
3. Tenured/tenure eligible faculty as % of total instructional faculty (Fall 2007)	100%
4. FTE students taught (Fall 2007)	116.0
5. Total Expenditures Business Information System	\$ 755,655.00
6. Direct instructional expenditure per SCH	\$ 295.00
7. Direct instructional expenditure per FTE student	\$ 8,500.00
8. Personnel cost as percent of direct instructional ex	98%

UNDERGRADUATE PROFILE	UNDERGRAD	
Total	89	
Gender		
Women	38	43%
Men	51	57%
Race/Ethnicity		
African American / Black	79	89%
American Indian / Alaskan Native	0	0%
Asian / Pacific Islander	3	3%
Hispanic	0	0%
International	0	0%
White	7	8%
Race/Ethnicity Unknown	0	0%
Geographic Distribution (Degree-Seeking)		
Tennessee		76%
Other US States & Territories		24%
Other Countries		0%
Age (Degree-Seeking)		
Average Age		25
Percent of Undergraduates Age 25 or Older		38%

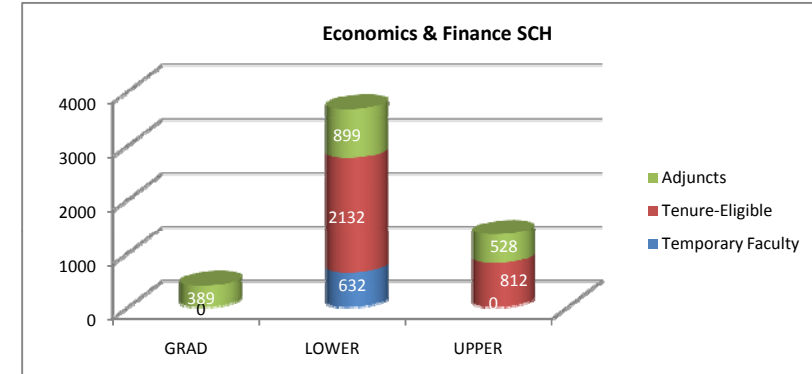


NOTICE: Data Sources: SIS Batch Reports; Banner Scripts & Query Reports; 2008-2009 Budget Summary. This data portrait, prepared by the Office of Institutional Effectiveness, Quality & Assessment, is for internal use only by TSU.



1. Total Headcount faculty (Fall 2007)	15.0
2. Total FTE Faculty (Fall 2007)	6.3
3. Tenured/tenure eligible faculty as % of total instructional faculty (Fall 2007)	52%
4. FTE students taught (Fall 2007)	155.3
5. Total Expenditures Economics & Finance	\$ 1,271,302.00
6. Direct instructional expenditure per SCH	\$ 233.00
7. Direct instructional expenditure per FTE student	\$ 6,688.00
8. Personnel cost as percent of direct instructional ex	98%

UNDERGRADUATE PROFILE	UNDERGRAD	
Total	66	
Gender		
Women	17	26%
Men	49	74%
Race/Ethnicity		
African American / Black	56	85%
American Indian / Alaskan Native	0	0%
Asian / Pacific Islander	0	0%
Hispanic	0	0%
International	0	0%
White	10	15%
Race/Ethnicity Unknown	0	0%
Geographic Distribution (Degree-Seeking)		
Tennessee		68%
Other US States & Territories		30%
Other Countries		2%
Age (Degree-Seeking)		
Average Age		22.61
Percent of Undergraduates Age 25 or Older		15%



NOTICE: Data Sources: SIS Batch Reports; Banner Scripts & Query Reports; 2008-2009 Budget Summary. This data portrait, prepared by the Office of Institutional Effectiveness, Quality & Assessment, is for internal use only by TSU.